

SpecsIntact

Installation Guide



INTRODUCTION 2

- About This Installation Guide 2
- How to Use this Installation Guide 2

CHAPTER 1: SPECSINTACT BASICS 3

- Installation Basics 3
- Other Software Components 3
- System Requirements 3

CHAPTER 2: Types of Installations 4

- Executable 4
- Windows Installer (MSI) 4
- SpecsIntact Lite 4

CHAPTER 3: Downloading SpecsIntact..... 6

- Department of Defense (DoD) 6
- A&E Firms and Other Government Agencies 6
- Download SpecsIntact Lite 7

CHAPTER 4: Local Executable and MSI Installations 8

- Executable or MSI Installation 8
- MSI Installation - IT Administrators 13

CHAPTER 5: SpecsIntact Lite 14

- SpecsIntact Lite Extraction Process 14

CHAPTER 6: Working Directories and Connecting Masters..... 19

- Working Directories 19
 - Working Directory Terms 19
 - Working Directory Rules 20
- Default Setup Options 20
- Custom Setup Options 23
 - Connect Masters..... 26
 - Counting Users..... 30






About This Installation Guide

The **SpecsIntact Installation Guide** introduces the fundamental concepts of the different installation types and processes. This guide will walk you step-by-step through the installation process and initial setup, ensuring **SpecsIntact** is fully operational and ready to use when you are done.

To get the most out of your experience, it's recommended that you use the **Installation Guide** along with other valuable resources found on the **SpecsIntact** Website's **Support & Help Center** page. These include [eLearning Modules](#), Web-Based Help, and the **User Guide**. By exploring these tools, you'll learn fundamental concepts and discover how to fully utilize all the features within the **SpecsIntact** system to complete your projects successfully. All these resources are easily accessible directly from the **SpecsIntact Help** menu.

How to Use this Installation Guide

Throughout this **Installation Guide**, we will point out key information and use the symbols noted below:

-  Helpful Hint: Tips that might make your work easier.
-  Note: Important point, so pay attention.
-  Caution: The condition or action may cause problems - proceed at your own risk.
-  Stop: Proceed at your own risk. Stop - means *stop* - don't do it, or you may regret it later!
-  eLearning Modules: In-depth video instructions to teach the successful use of SpecsIntact. These are available on the SpecsIntact Website on the eLearning page.


Installation Basics

Other Software Components

During the installation process, the software will give you the choice to download and install the latest **Unified Facilities Guide Specifications (UFGS) Master**. The **UFGS Master** is maintained by each of the agencies for use by the Army, Navy, Air Force, the Defense Agencies, and the DoD Field Activities for planning, design, construction, sustainment, restoration, and modernization of facilities. The **UFGS Master** aligns with the Construction Specification Institute's (CSI) current MasterFormat edition. This master database contains both unified and agency-specific guide specifications, enabling users to produce customized specifications for their projects.

System Requirements


The initial local installation of **SpecsIntact** itself is very light, requiring only about 50 MB of disk space. This minimal footprint means it won't take up much room on your hard drive.

-  For optimal performance, ensure your Windows system meets the [Microsoft Windows](#) requirements.

It's crucial to recognize that your projects will require additional disk space, as outlined below:

- **Jobs:** These are your specific project files, and their size will vary greatly depending on the complexity and number of specifications they contain.
- **Masters:** These are your organization's Master specification documents, which can also grow as you develop and refine them over time.

As additional projects are created and stored, disk space usage will increase. It's wise to anticipate this growth and ensure you have ample free space available.


-  To run **SpecsIntact**, you'll need at least one system printer. This can be the **SpecsIntact PDF** printer, which you can install along with **SpecsIntact; Adobe PDF**; or a physical printer.

SpecsIntact offers three installation packages - the Executable, MSI, and SpecsIntact Lite - each uniquely suited for specific installation needs and user requirements.

Executable

The Executable (**SI.exe**) installation package is the intended method for local software installation and is user-specific. This installation supports installing the same or newer versions over existing installations, as well as side-by-side installations of different **SpecsIntact** versions. This installation is the most widely used among **SpecsIntact** users. We'll cover more about this installation type in Chapter 4.

Windows Installer (MSI)

 The Windows Installer MSI installation is primarily intended for IT Administrators!

The MSI (**SpecsIntact.msi**) installation package integrates with third-party software deployment tools. This installation supports silent or pre-configured installations to multiple systems across a network, saving administrators time by eliminating the need to visit each system individually, providing a convenient way to streamline the desktop application installation, and is discussed further in Chapter 4.

Version Comparison		
Feature	Local Executable	MSI
Installed on the Local drive	✓	✓
End-user or assisted interface	✓	
Automated Remote/Silent Installation Capable		✓
Side-by-side Installation with Other Versions	✓	
Overlaid Software Updates	✓	

SpecsIntact Lite

The **SpecsIntact Lite (SILite.zip)** package is designed for users with restricted permissions who cannot run standard installations like the Executable (**SI.exe**) and MSI (**SpecsIntact.msi**) versions. **SpecsIntact Lite** runs independently, giving you access to the latest features. You'll learn more about this version in Chapter 5.



SpecsIntact



To prevent conflicts, avoid installing both MSI and Executable versions on the same computer. If you need to change your installation type (e.g., from MSI to an executable or vice versa), uninstall the current version before installing the new one.

Since both the Executable (**SI.exe**) and MSI (**SpecsIntact.msi**) installation packages are installed locally, the Working Directories -- containing your Jobs and Masters -- can be placed on a network drive. Placing the Working Directory on your network has added benefits since the network is typically backed up daily, unlike local hard drives.

The precise procedure for downloading and installing SpecsIntact varies depending on your organization. Each organization may have different internal IT policies so you will need to follow your organization's unique guidelines.

Department of Defense (DoD)

- USACE: Request **SpecsIntact** through the USACE App Portal. Once approved, the software will be automatically pushed and installed on your system.
- NAVFAC: Request **SpecsIntact** through the Software Center. Once approved, the software will be automatically pushed and installed on your system.
- AFCEC: Download **SpecsIntact** from the **SpecsIntact** Website, then contact your IT Administrator to install the software.



Once **SpecsIntact** is approved, DoD users who receive automatic software installation from your organization can skip the details in this chapter and proceed directly to Chapter 6 to finish the setup.

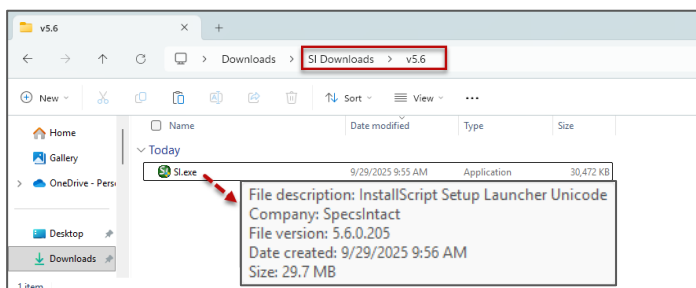
A&E Firms and Other Government Agencies

First, download the most recent version of the **SpecsIntact** software from the **SpecsIntact** Website at <https://specsintact.wbdg.org/software/download>.

When downloading the software, save it to a unique folder (e.g., C:\Downloads or C:\SI Downloads). This will ensure the **SpecsIntact** installation runs properly and avoid receiving false or erroneous messages.



Avoid executing the installation directly within your web browser. For best results, download the installation package to your local system and launch it from there to prevent any browser-related conflicts.



To check the Executable version (**SI.exe**), hover over the **SI.exe** file in Windows File Explorer. The version and other details will appear in a pop-up.



The SpecsIntact MSI version (**SpecsIntact.msi**) isn't easily accessible and requires a third-party MSI reader tool. The system administrator, who manages simultaneous deployments, should have this utility.

Download SpecsIntact Lite

The most recent version of **SpecsIntact Lite** can be downloaded from the **SpecsIntact** Website at <https://SpecsIntact.wbdg.org>. On the software download form, select the option to download **SpecsIntact Lite**.

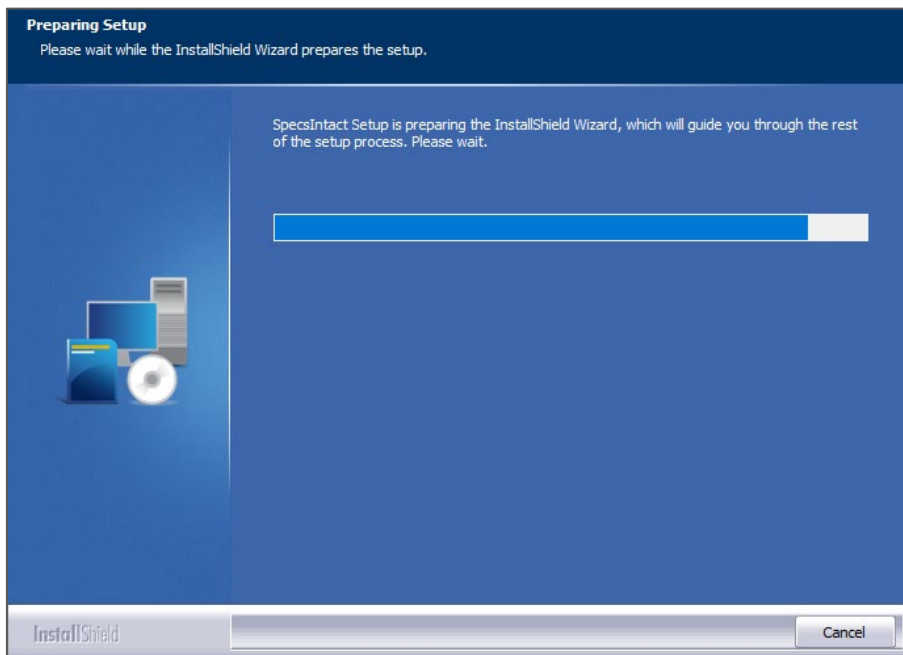
With the **SpecsIntact** software downloaded, follow the detailed steps below to install the Executable or MSI version of **SpecsIntact**.



DoD users whose software is automatically deployed and installed by your organization should skip this chapter and continue with Chapter 6 to complete the setup process.

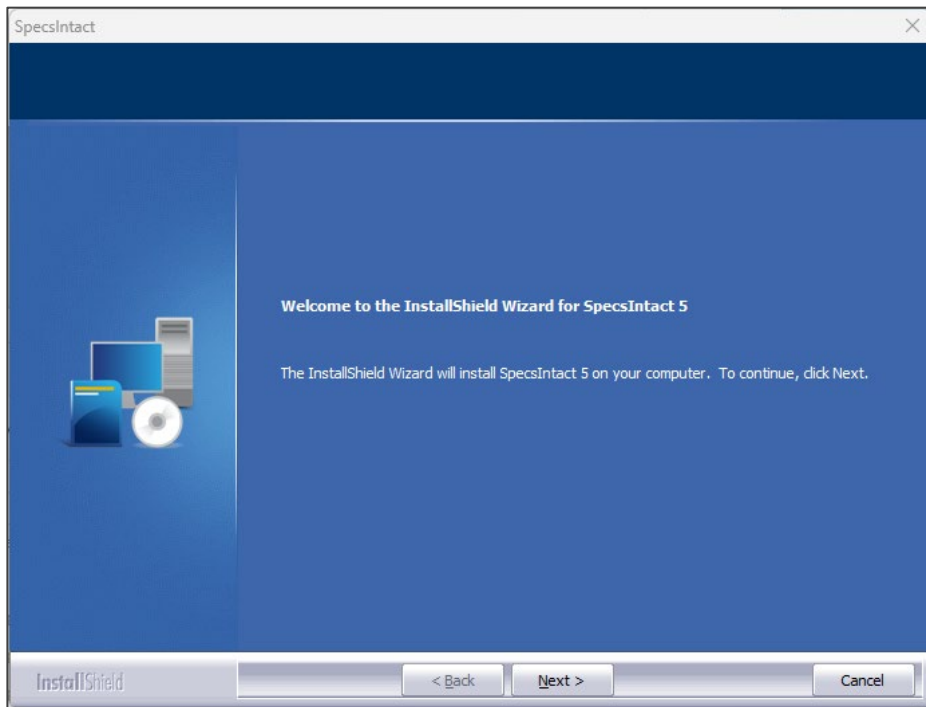
Executable or MSI Installation

To begin the Executable or MSI installation, open the Windows File Explorer to locate the **SI.exe** or **SpecsIntact.msi** file previously downloaded. Once located, double-click to begin the installation process.

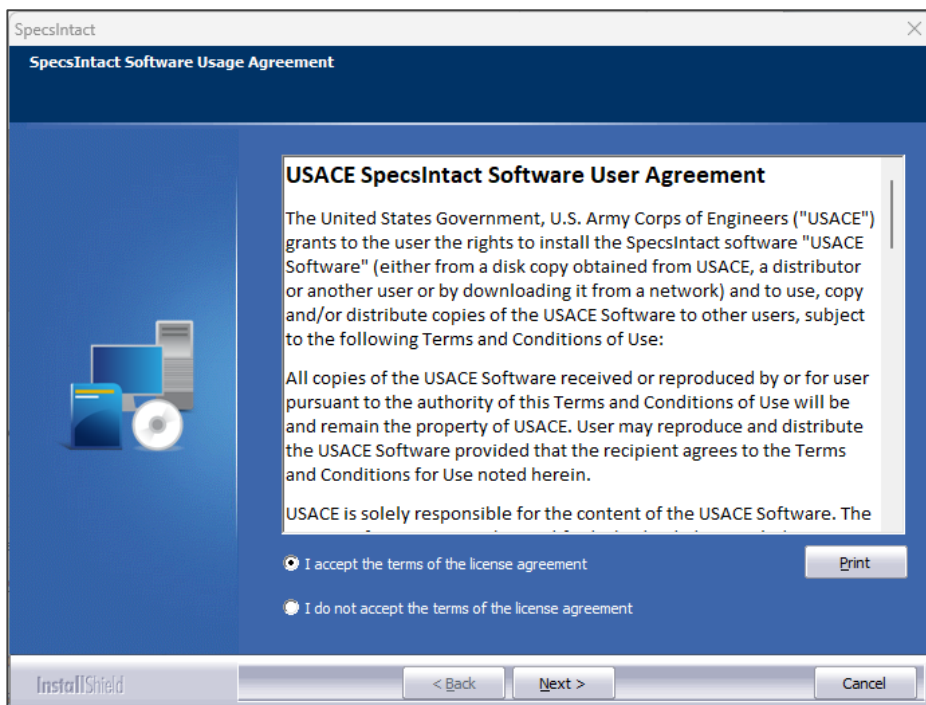


Preparing for Setup

SpecsIntact

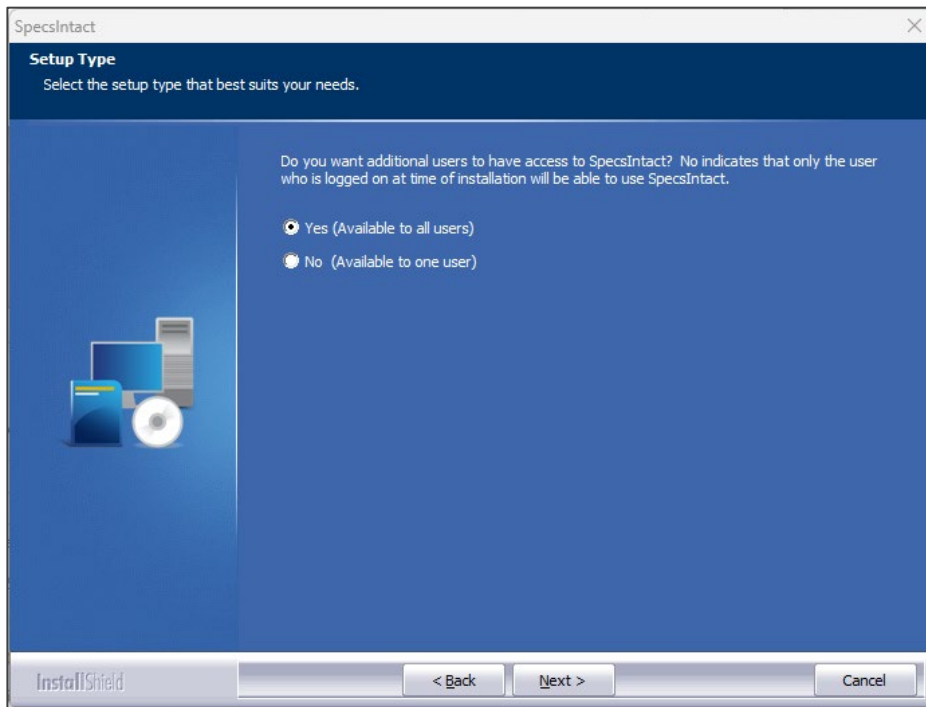


Click Next

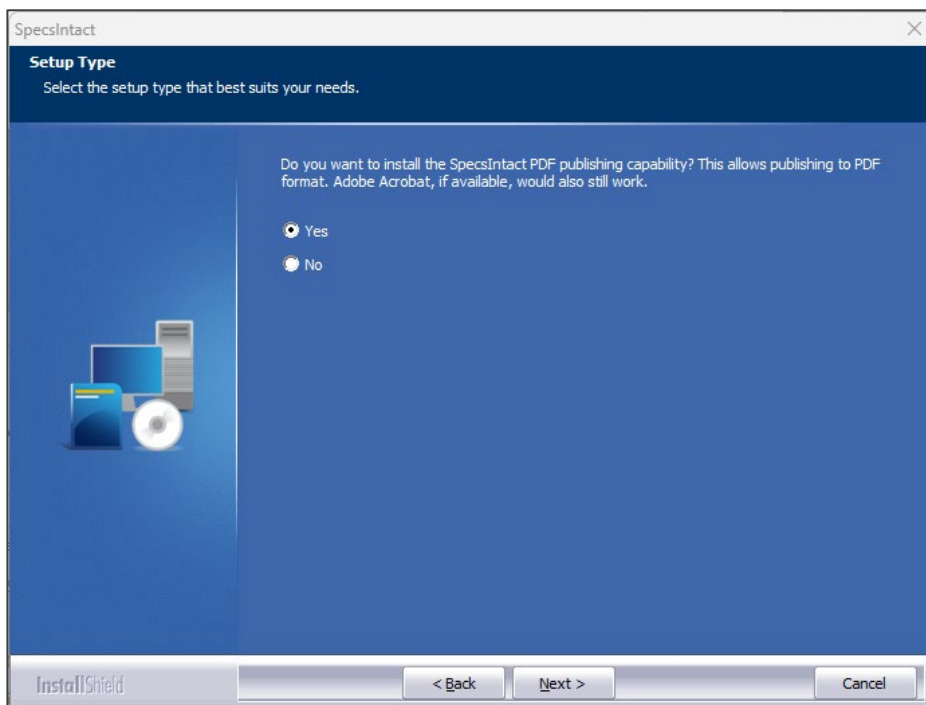


Select I accept the terms of the license agreement, then click Next

SpecsIntact

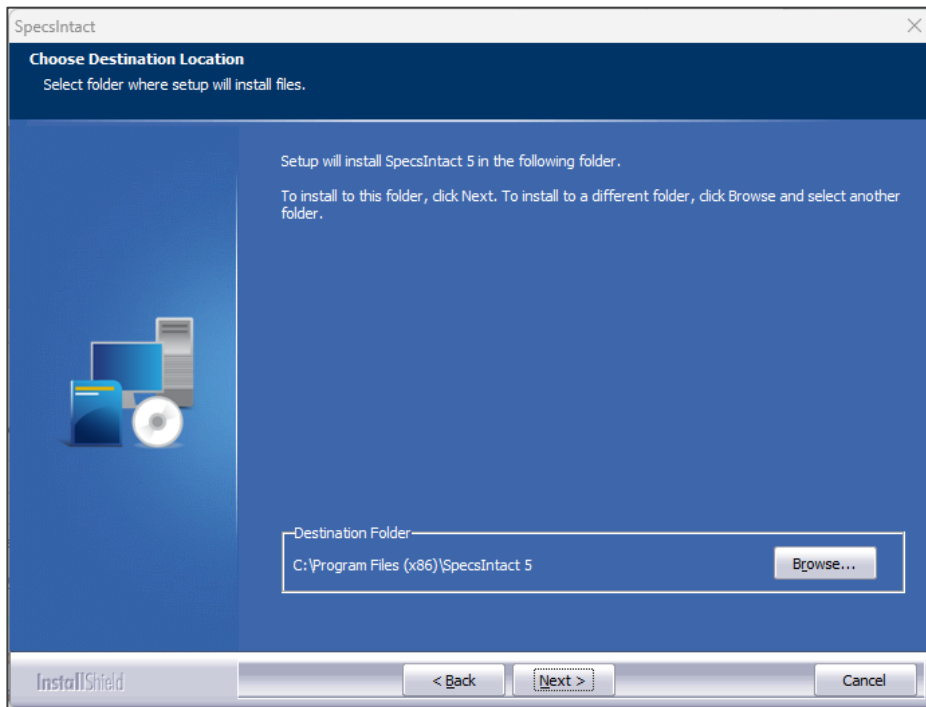


The default **Yes** is recommended. *Click Next*



The default **Yes** is recommended. *Click Next*

SpecsIntact

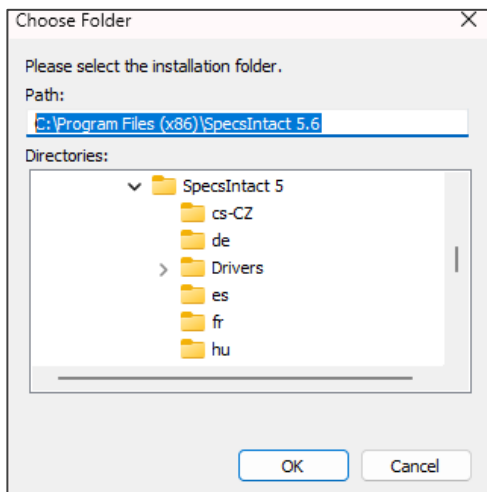


The default **Yes** is recommended. *Click Next*

Windows 11

The default destination for 32-bit applications is
C:\Program Files

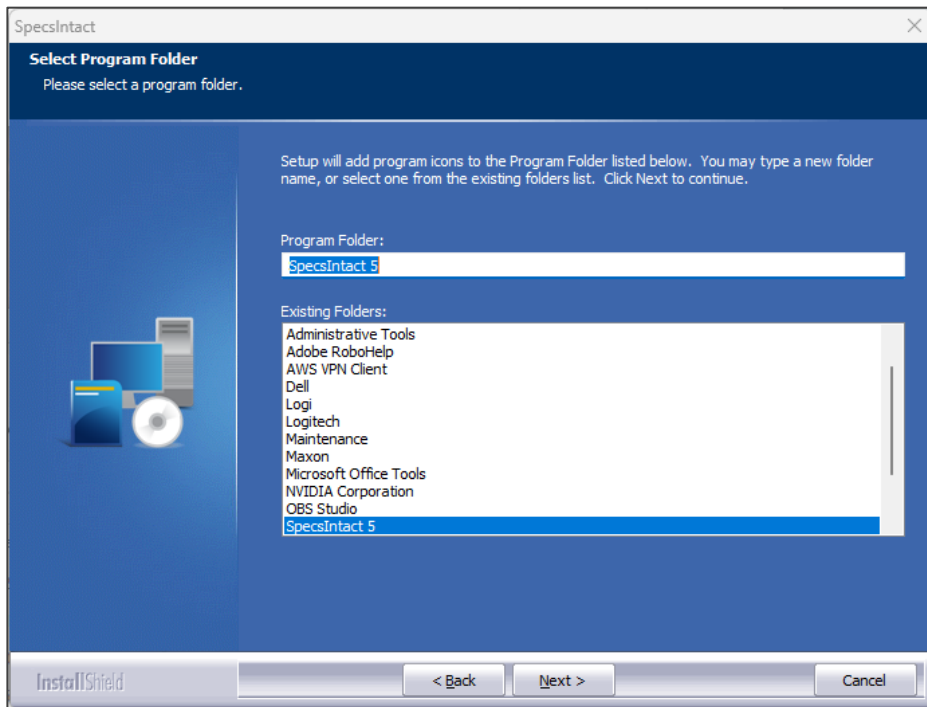
Skip the next two steps if you are using the default destination.



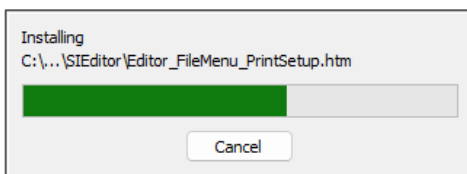
Type the **Path** or browse to change the destination folder, then *click OK*

When choosing the destination folder for a local installation, the path can be typed directly into the box, or you can use the directory structure and browse to the desired destination.

SpecsIntact

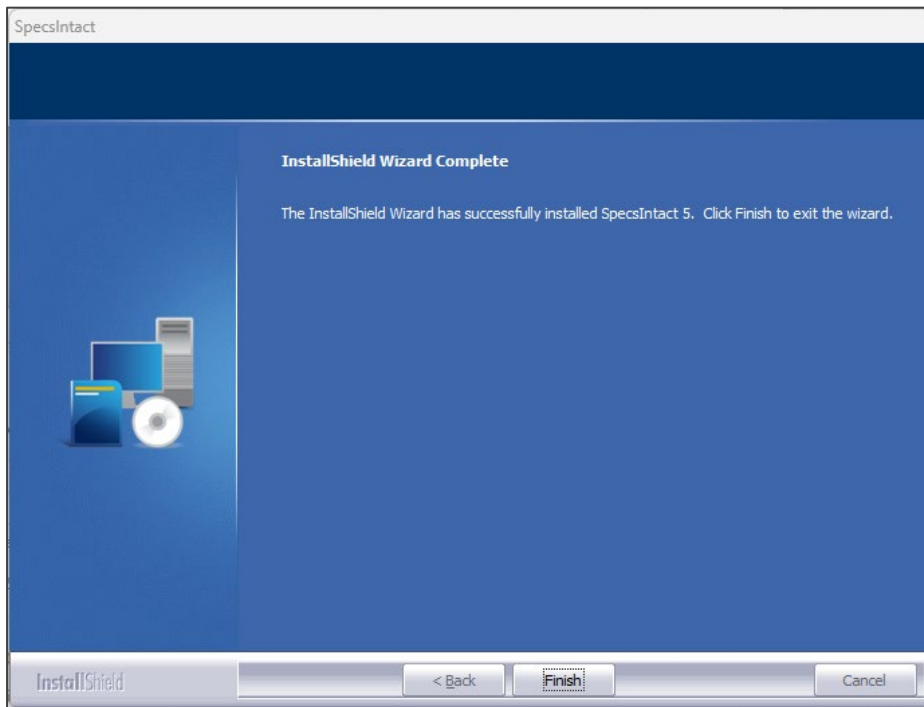


Click Next



This action may take several minutes!

Files begin to copy to the local drive (destination folder)



Click **Finish**


Once the installation is complete and **SpecsIntact** opens for the first time, you will be prompted to connect Masters and set up Working Directories, as described in Chapter 6

MSI Installation - IT Administrators

This section provides supplementary information intended for IT Administrators. The MSI installation provides better integration with third-party software deployment tools used to create silent or pre-configured installations. A third-party Software Deployment Tool like Microsoft's 'Windows Installer Service' will define the parameters that instruct the installer how to run (e.g., where to install the program, if a shortcut is placed on the desktop, etc.). IT Administrators must have the expertise required to use these tools to integrate with **SpecsIntact's** MSI installation package.

Silent installations require no user interaction, and it is a convenient way to streamline the installation process of a desktop application on several systems at once.

If this installation is not what you expected, uninstall this version, then request or download the Executable (**SI.exe**) version.

-  For help creating silent or pre-configured installation packages, seek assistance from the support team for your third-party software deployment tool.

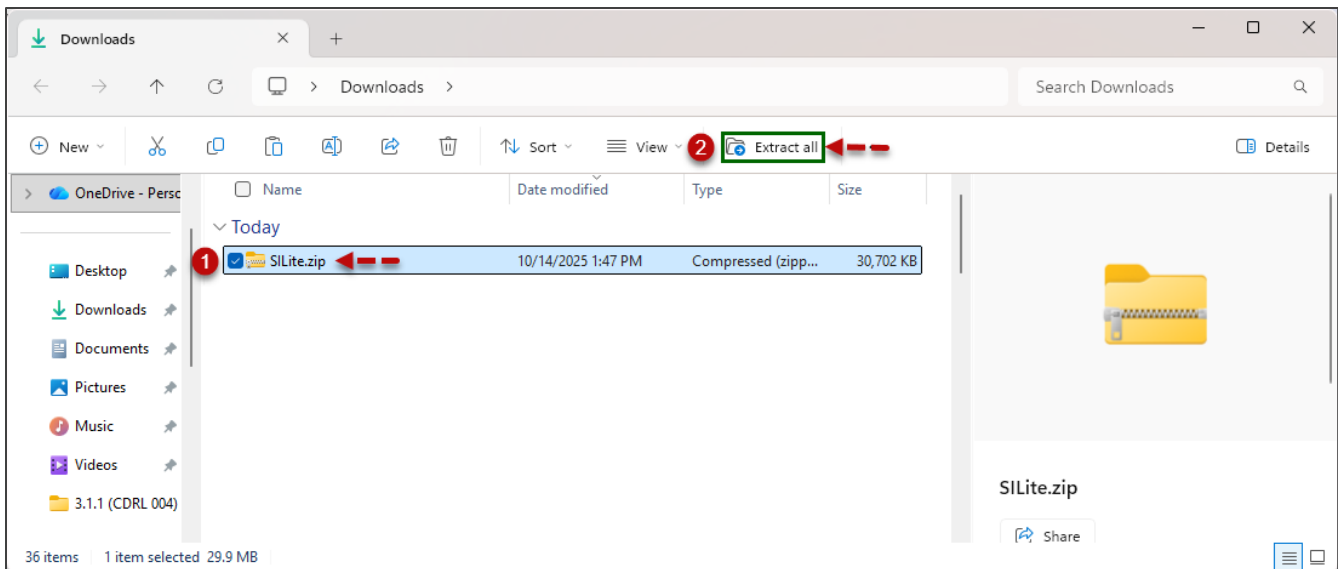
Once the installation is complete and the end-user opens **SpecsIntact** for the first time, they will be prompted to connect Masters and set up Working Directories, as described in Chapter 6.

The **SpecsIntact Lite** software package is available for users who have restricted permissions preventing them from installing or updating the regular versions of **SpecsIntact**. When setting up the **SpecsIntact Lite** version, the software will be extracted then copied to either your system's Documents folder or directly on the root (C:) drive.

SpecsIntact Lite will run independently using the same files as other **SpecsIntact** installed versions (e.g., Executable and MSI). As you begin to use **SpecsIntact Lite**, it automatically creates and maintains the necessary **SpecsIntact** registry settings and supporting files. These files are stored in the user's Application Data (AppData) folder, which are required for **SpecsIntact** to function properly.

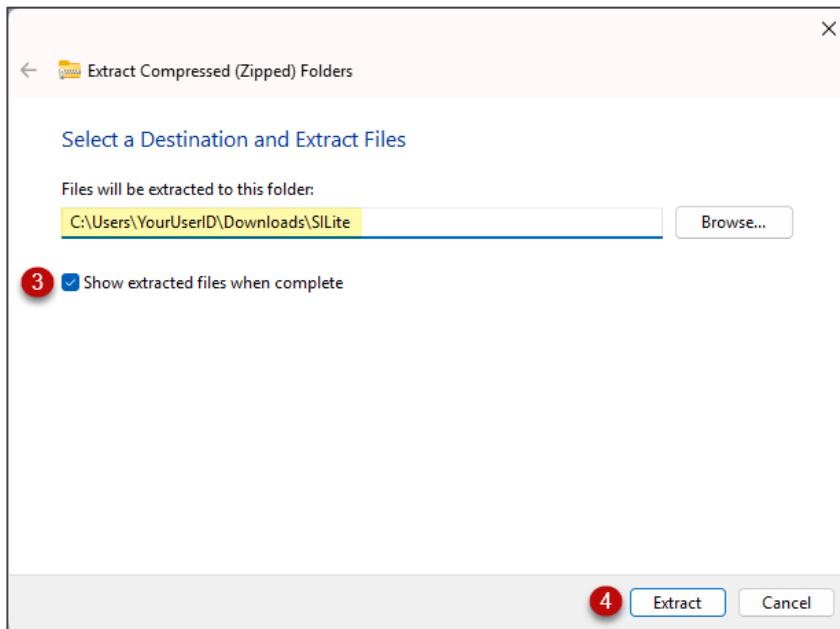
SpecsIntact Lite Extraction Process

After downloading, use the Windows File Explorer to navigate and open the **SILite.zip** file in the Downloads folder.

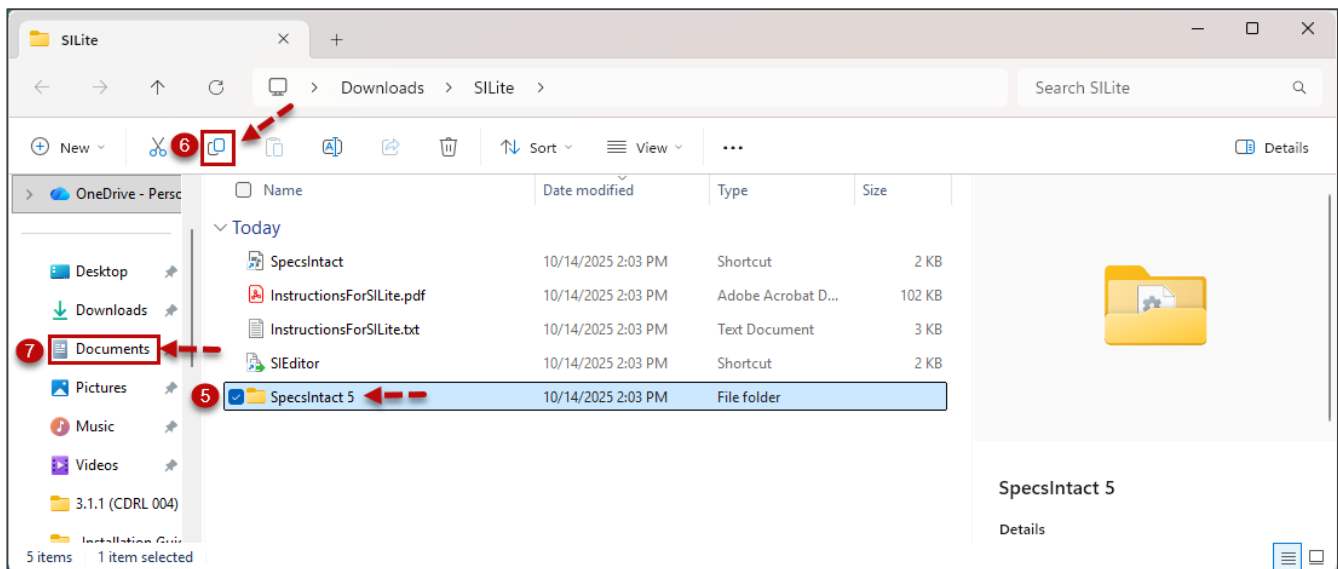


Select the **SILite.zip** file, then click the **Extract All** button

SpecsIntact

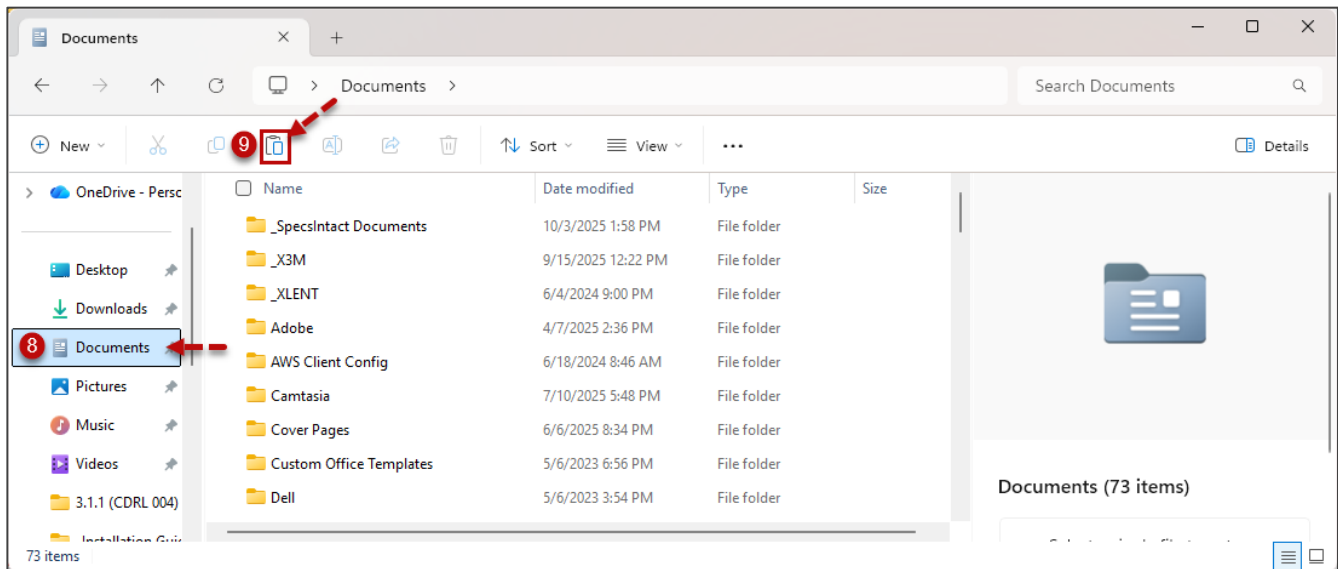


Select **Show extracted files when complete**, then *click Extract*



Select the **SpecsIntact 5** folder, *click the Copy* button, then select the **C: drive** or **Downloads** folder

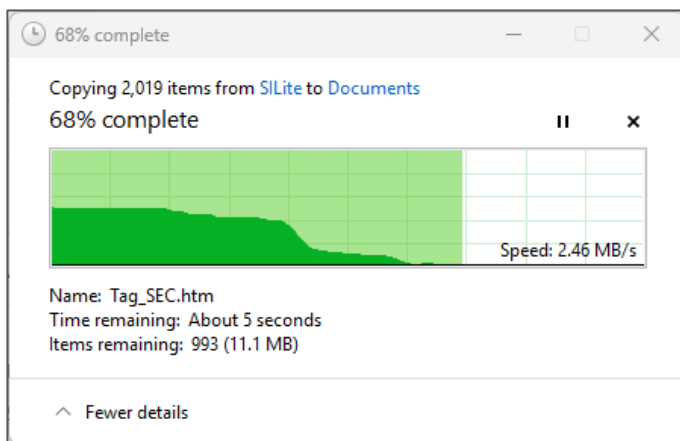
SpecsIntact



With the **C: drive** or **Documents** folder selected, *click* the **Paste** button



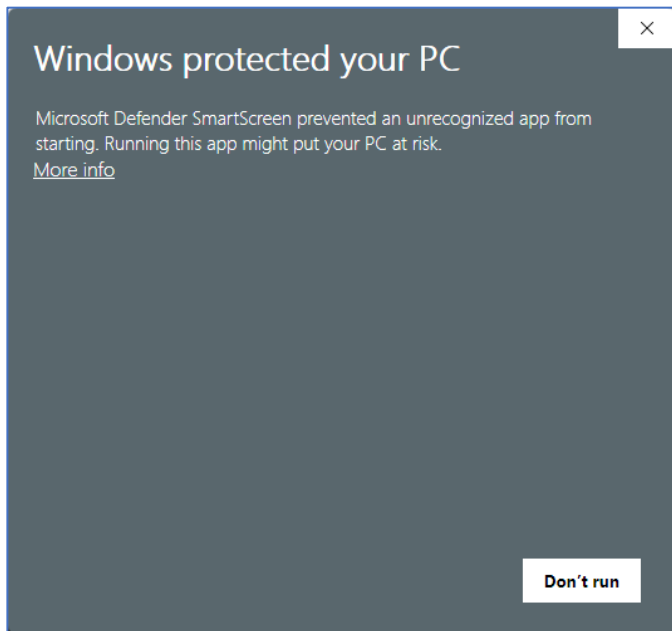
If **SpecsIntact Lite** does not function correctly within the user profile Documents folder, relocate the **SpecsIntact 5** folder to the C: drive (e.g., C:\SpecsIntact 5).



This action may take several minutes!

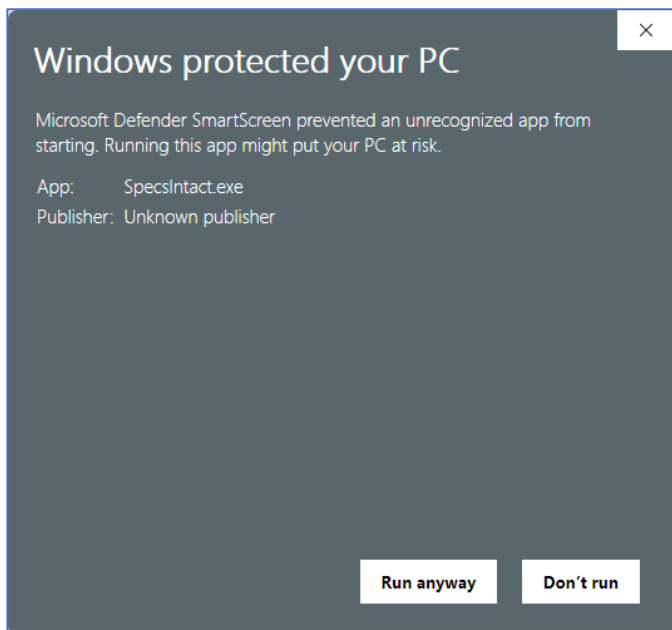
Now that **SpecsIntact Lite** was successfully extracted and copied, *open* Windows File Explorer, *navigate* to the **SpecsIntact 5** folder, then *double-click* the **SpecsIntact.exe** file to begin using the software.

SpecsIntact



On the **Windows protected your PC** window, *click More info*

If the **More info** and **Run anyway** options are not available, you need to unblock the executable files. Open **Windows File Explorer**, *navigate* to the **SpecsIntact 5** folder, *right-click* on the **SpecsIntact.exe** file, and *select Properties*. In the **Properties** window **General** tab, *check Unblock*, then *click Apply* and **OK**. Repeat this process for the **SIEditor.exe** file.




Click Run anyway

 To create desktop shortcuts, *click Yes* the first time you run **SpecsIntact**.

If this is the first time running the **SpecsIntact Lite** application without a previous installation of the software, refer to Chapter 6 to finish the setup by establishing your Working Directories and connecting to the **UFGS Master**. If you are using **SpecsIntact Lite** to update a previous installation, the software will automatically detect your existing settings, so no additional setup is required.

A PDF printer is essential for creating Jobs and Masters. **SpecsIntact** supports **Adobe PDF** and its own integrated **SpecsIntact PDF** printer. Since **SpecsIntact Lite** is not a full installation, the integrated **SpecsIntact PDF** printer must be installed separately. You can find the installation option, in the **SpecsIntact Explorer** by *selecting* the **Setup** menu > **Install SpecsIntact PDF Printer...**

-  Adding a new printer driver might require administrative privileges, so you may need your IT Administrator to install it for you.

Working Directories

Working Directories are essential to **SpecsIntact**, providing a central place to store all your Jobs and Masters. You can create multiple directories on local or network drives to suit your project organization needs.

To simplify your initial setup, we will begin by exploring the default features offered on the **Welcome to SpecsIntact** window. This convenient setup window is only shown to new users when the software is installed and launched for the first time.

Working Directory Terms

A Working Directory is a dedicated directory on your local or network drive, used to store all **SpecsIntact** components, including Jobs, Masters, Templates, and Exported files. To fully grasp the Working Directory folders in Windows File Explorer, you should first familiarize yourself with these core **SpecsIntact** terms:

- **Working Directories:** A dedicated directory on your local or network drive, used to store all **SpecsIntact** components, including Jobs, Masters, Templates, and Exported Files.
- **Jobs:** A collection of projects created from a Master. Each Job is built from the Master guide specifications.
- **Masters:** A collection of standard agency guide specifications used to create a Job. The source files for a Master do not need a dedicated pulldata folder since these files are directly below the Master.
- **Pulldata:** Contains the working Section (.sec) files for a Job.
- **Prntdata:** Contains the temporary Processed (.prn) files for a Job or Master. These files are automatically deleted and immediately replaced with the new, updated files every time the Job or Master is processed.
- **Exports:** Contains the **SpecsIntact** exported files (e.g., Submittal Register, Tailoring Options List, Search Results, etc.). These files are contained within a specific Job or Master.
- **Templates:** **SpecsIntact** templates include the **WSection** outline, used as a guide for new Section creation, and **WFormat**, which are legacy user-created outlines for generating various formatted pages such as cover and sign-off pages.

- **Sections:** Guide specifications that cover specific aspects of construction.

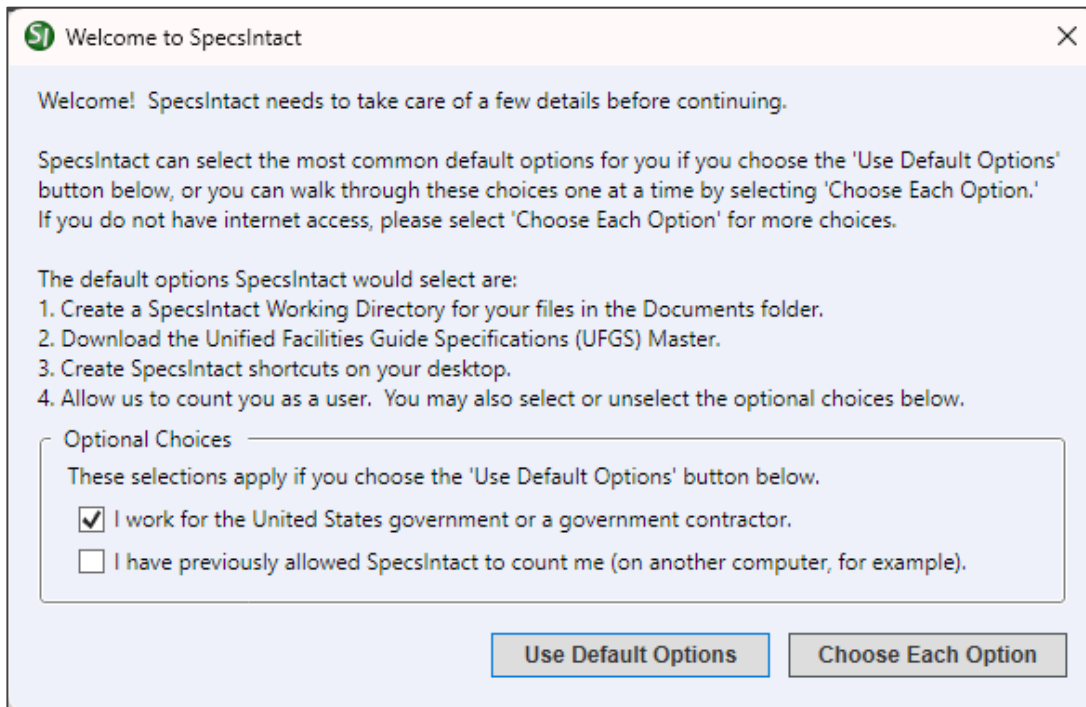
Working Directory Rules

- Avoid creating Working Directories in the SpecsIntact installation folder or directly on the root drive (e.g., C:, S:, etc.). This will lead to problems with both your directories and Masters.
- Avoid using OneDrive for Working Directories. Depending on the setup, this may cause issues with Master access or result in Section corruption.
- Keep Working Directories simple and avoid long path names. Aim for a path of four levels or less and a maximum of 200 characters total.
- Avoid using UNC paths for Working Directories. **SpecsIntact** does not fully support Universal Naming Convention (UNC) paths. UNC paths can lead to unpredictable, intermittent problems during general use.
- Avoid using Jobs or Masters in the path name, as these are reserved folder names already in use by **SpecsIntact**.
- Limit using special characters in the path name to only a hyphen (-) or an underscore (_). Using other characters will cause unexpected results.

Default Setup Options

Several default options are available in the **Welcome to SpecsIntact** window, which appears only for new users after installing and launching **SpecsIntact** for the first time.

While the recommended default options minimize setup frustration, you can customize your settings by clicking the **Choose Each Option** button.



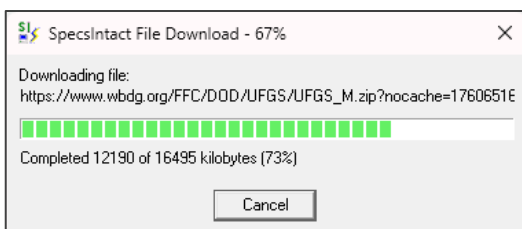
Select the first option if you are a government employee or contractor.
Select the second option only if you are a prior **SpecsIntact** user who allowed user counting.
Then **click Use Default Options**

If you prefer to customize the setup, **click Choose Each Option** and skip to the **Custom Setup Options** section.



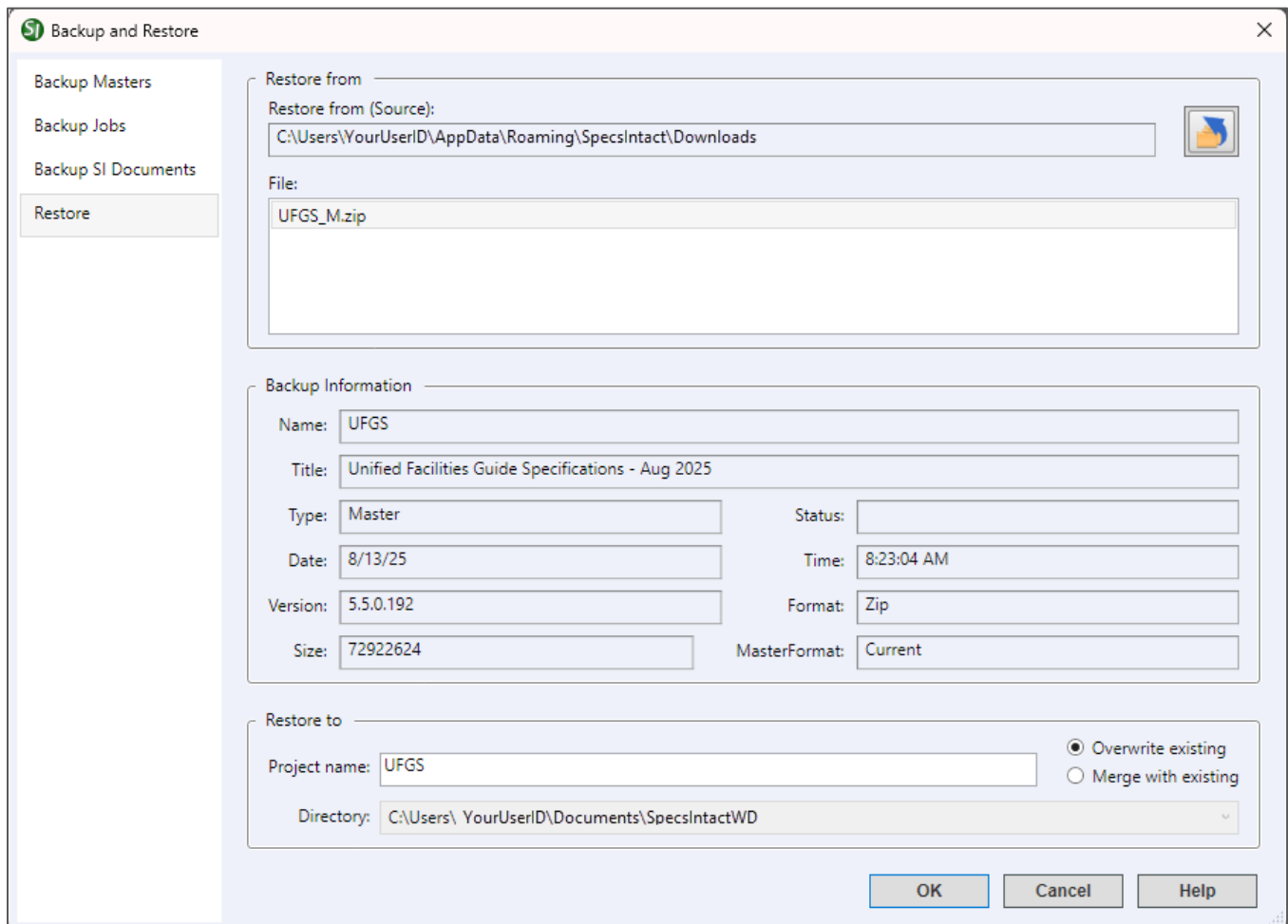
SpecsIntact automatically detects if your Documents folder is within OneDrive. When it does, it bypasses the **Welcome to SpecsIntact** window and immediately opens the customization options.

Clicking the **Use Default Options** during setup, the software will streamline the setup by executing the options listed in the **Welcome to SpecsIntact** window above.

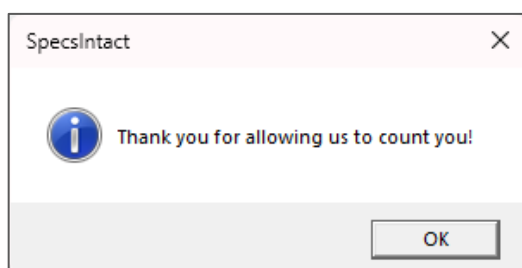


SpecsIntact begins downloading the **UFGS Master**

SpecsIntact



SpecsIntact will open the **Backup and Restore** window and automatically restore the **UFGS Master**.
This action may take several minutes!



Once the **UFGS Master** is restored, the message above will open. *Click OK*

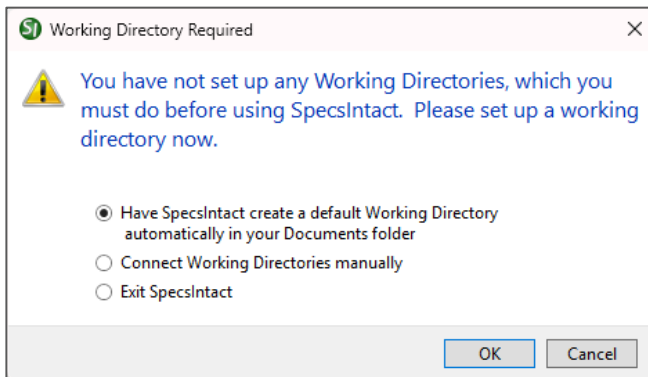
The default installation and configuration are finished, and all the necessary settings are in place. You can confidently begin to use **SpecsIntact** and proceed directly to creating your first project.

Custom Setup Options

New users launching **SpecsIntact** for the first time will see the **Welcome to SpecsIntact** window. Use the **Choose Each Option** button to access and customize your initial setup settings.

Working Directories

Default Working Directory

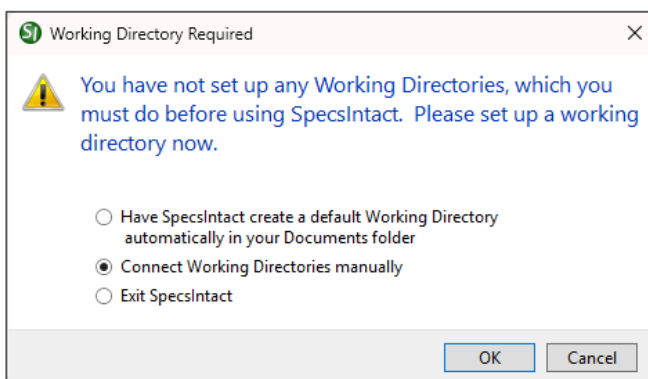


Click **OK**

This is the default setting for new installations.

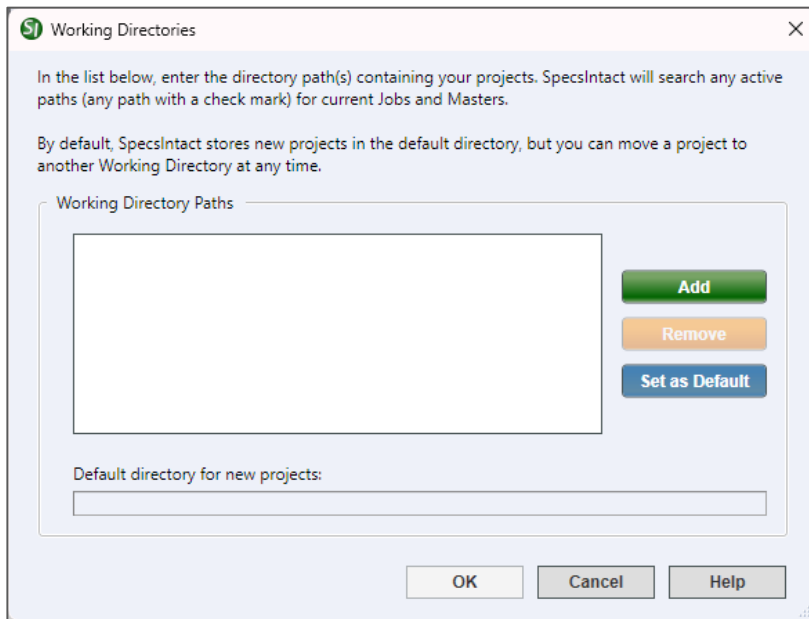
After *clicking OK*, continue to the **Connect Masters** section.

Connect Working Directories Manually



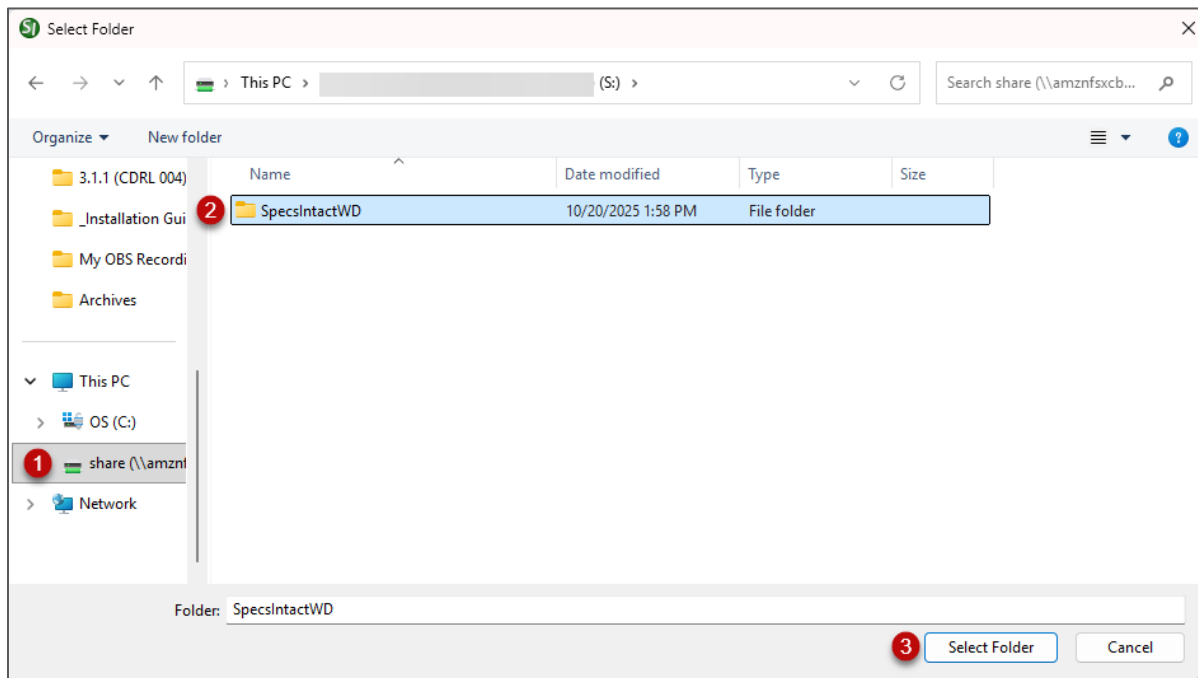
Click **OK**

SpecsIntact

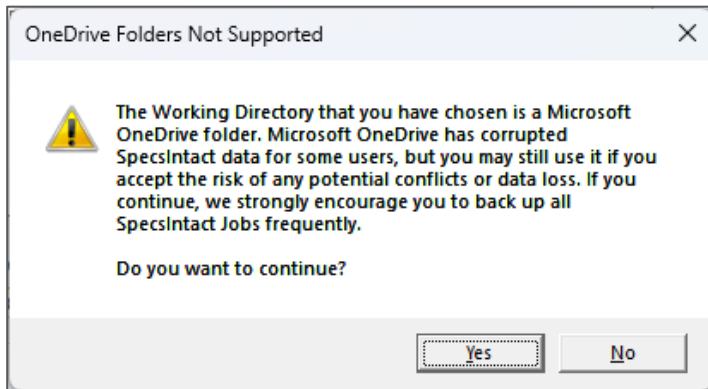


Click Add

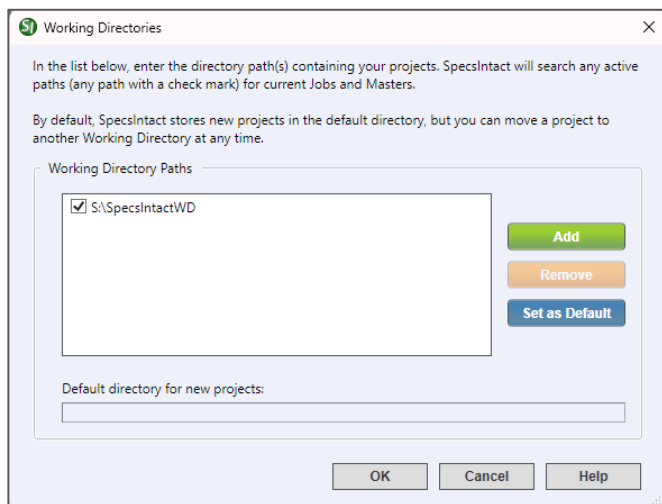
When specifying a new Working Directory, *navigate* to the desired location on a local or network drive to select either an existing folder or create a new one.



Click Select Folder



If you see this message, your selected Working Directory is currently in OneDrive. For better stability and performance, we highly recommend creating the Working Directory in your Documents folder within your user profile.



Click **Set as Default**, then click **OK**

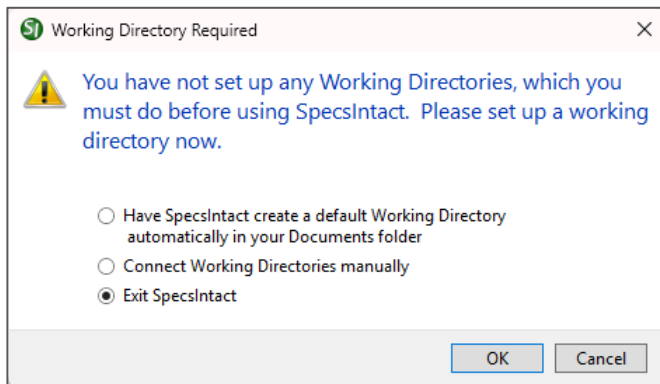
The **Set as Default** button allows you to designate the highlighted Working Directory as the default for new Jobs and Masters.

Continue to the **Connect Masters** section.



When utilizing multiple Working Directories, set up a dedicated Working Directory for your Masters so they are not inadvertently stored within a project's specific directory.

Exit SpecsIntact

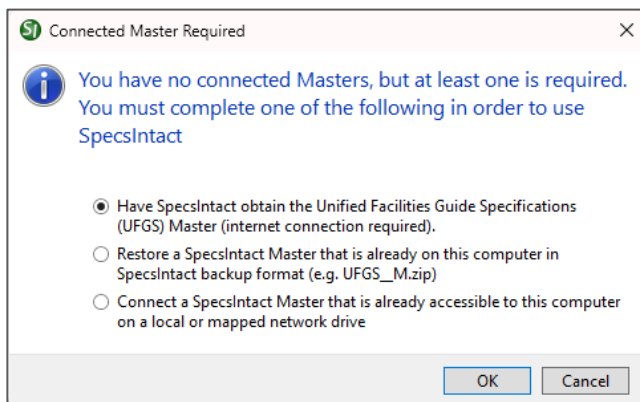


Click **OK**

When you have chosen **Exit SpecsIntact**, the setup process will stop, and the application will close.

Connect Masters

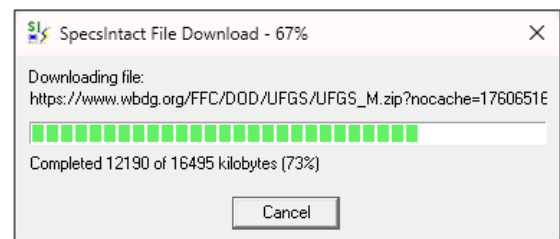
Have SpecsIntact Obtain The UFGS Master



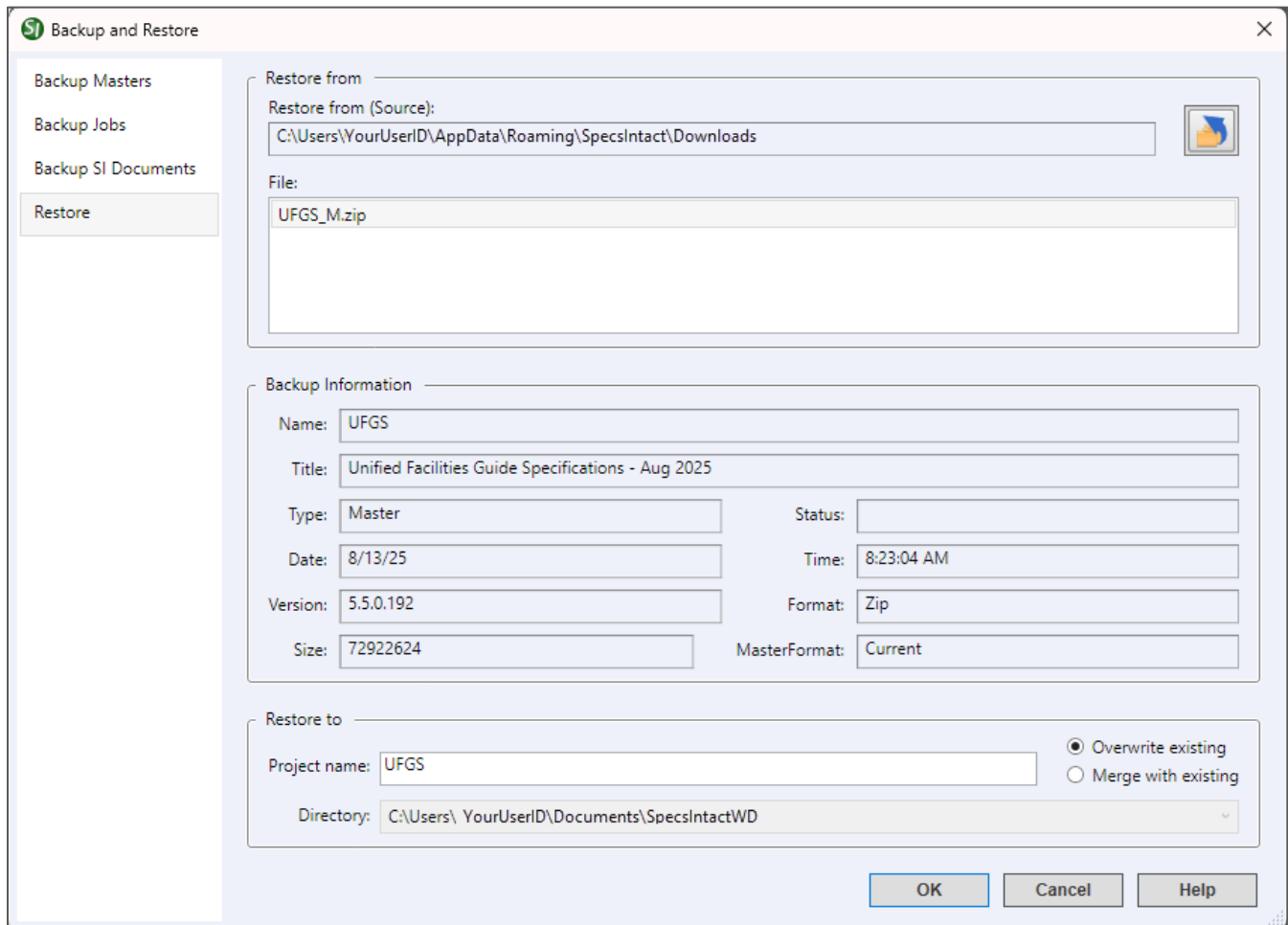
Click **OK**

This is the default setting for new installations.

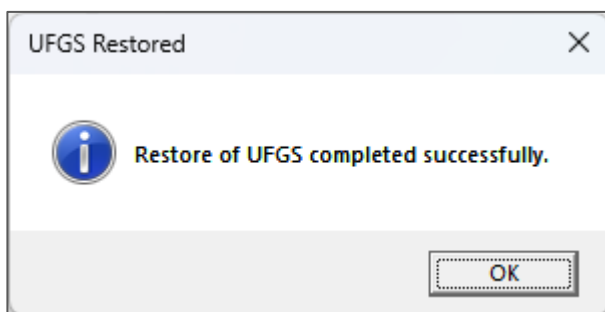
The software connects to the Whole Building Design Guide (WBDG) Website to download the **UFGS Master**.



SpecsIntact begins downloading the **UFGS Master**.

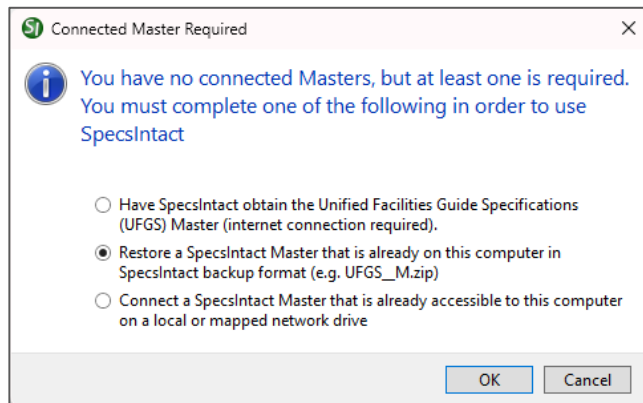


SpecsIntact will open the **Backup and Restore** window and automatically restore the **UFGS Master**.
This action may take several minutes!



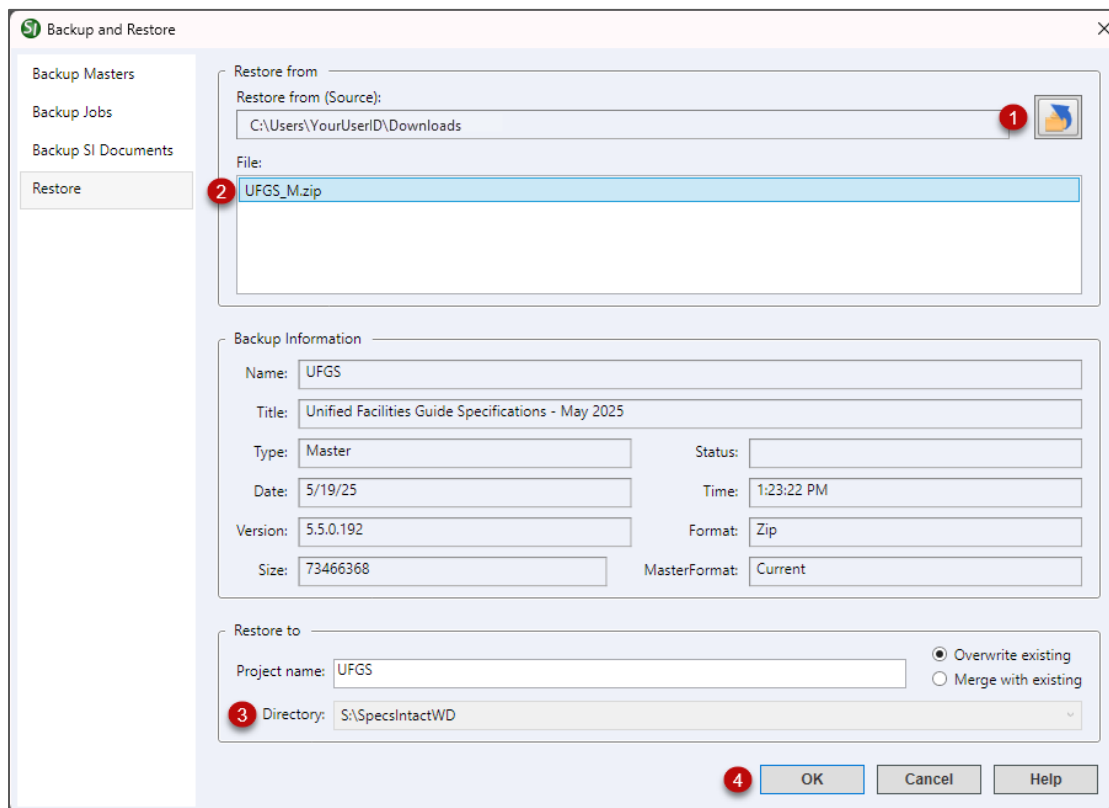
Click **OK**

Restore a SpecsIntact Master



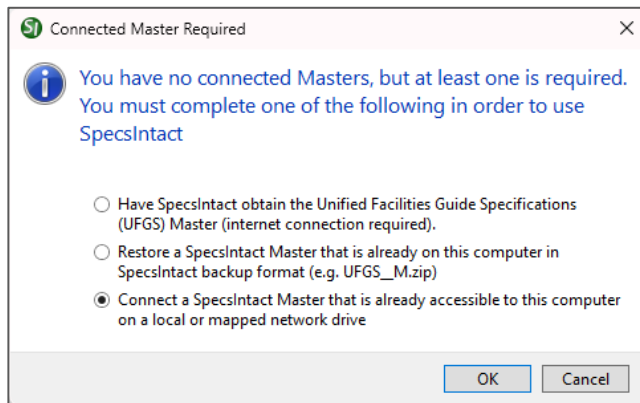
This option allows you to restore the **UFGS Master** that was previously downloaded and resides on your system.

Click **OK**



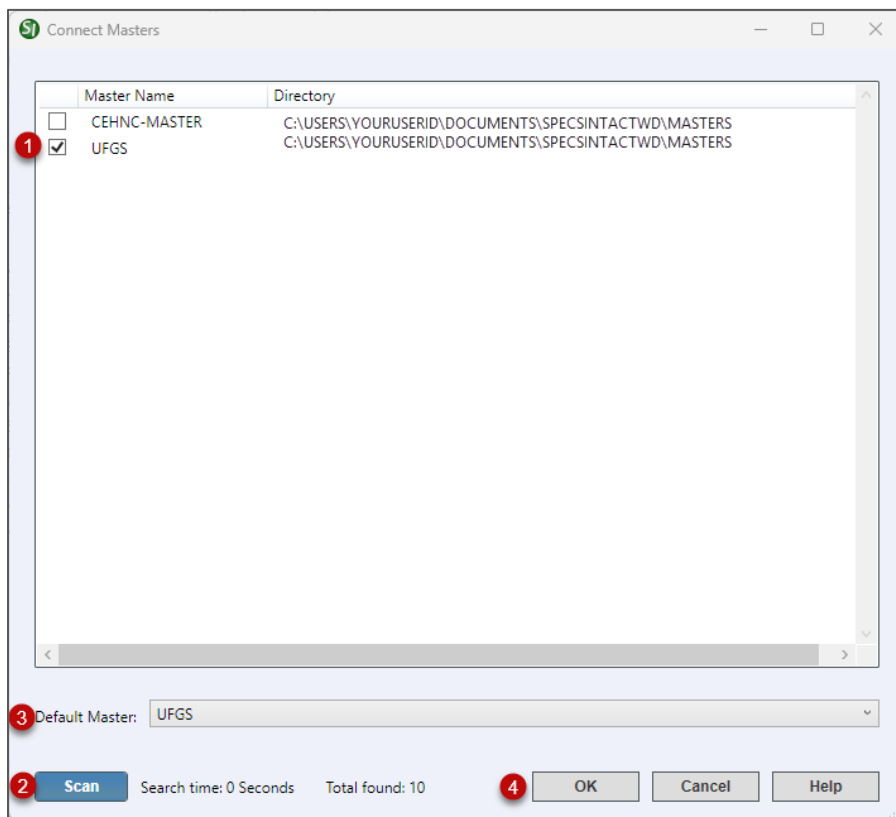
When the **Backup and Restore** window opens, *select* the **Change location** button (Step 1) to locate and *select* the Downloads folder where you downloaded the **UFGS Master**. After returning to the **Backup and Restore** window, *select* the **UFGS_M.zip** file (Step 2), verify the directory path (Step 3), and *click* **OK** (Step 4).

Connect an Existing SpecsIntact Master on a Local or Mapped Drive



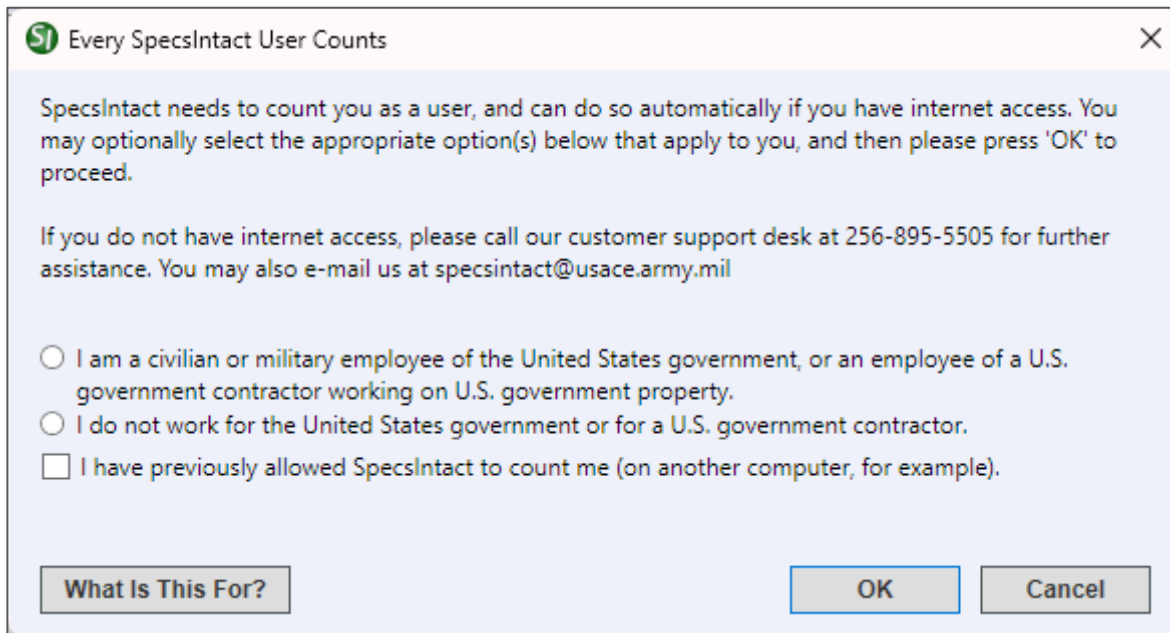
Click **OK**

This option allows you to connect to a Master that is already available on your system.



The third choice immediately opens the **Connect Masters** window, where you must either choose a Master from the list (Step 1) or *click Scan* to locate one on your drives (Step 2). If multiple Masters are selected, designate the **Default Master** (Step 3), then *click OK* (Step 4).

Counting Users



First, *select* the appropriate option (Option 1 or 2).

If you are reinstalling **SpecsIntact** on the same or a recently refreshed computer, and you have previously been counted, *select* the last option, then *click* **OK**.

Upon successful installation and setup, the **SI Explorer** opens to show all connected Masters and Jobs. If you have a connected Working Directory that contains Jobs, they will be displayed as well. **SpecsIntact** remembers these Working Directories and Masters for future sessions unless modified through the **Setup** menu.



For video instructions, watch all of the [eLearning](#) modules within **Chapter 1 – Getting Started**.